



**GARDENS**  
**OF PARRY SOUND**  
RETIREMENT RESIDENCE

# EXPANSION INFORMATION

Opening Spring/Summer 2019



Parry Sound's Finest Retirement Living Just Got Better



## The Gardens of Parry Sound is Growing

The grand expansion of the Gardens of Parry Sound is now underway. When the project is complete, a dramatic four-story addition will offer 37 new spacious suites as well as a new activity/events venue, more garden areas and private balconies. Other amenities will include an improved private dining room, additional parking, a country kitchen and an additional spa room.

The new addition will make the Gardens of Parry Sound the new standard for retirement living in Parry Sound.



## Rear Exterior

17 new suites are planned for the rear of the building. These new suites will feature private walkout balconies with amazing views of the forest and wildlife.

Private balconies are one of the features requested by many seniors since our original opening and we are happy to include them with this new expansion.

The expansion will also include the buildings only ground floor suites, which are made extra special with a large walkout terraces.



## Front Exterior

The new expansion will be attached to our current building with matching siding and design characteristics. There will be 20 additional suites added facing the front of the building.

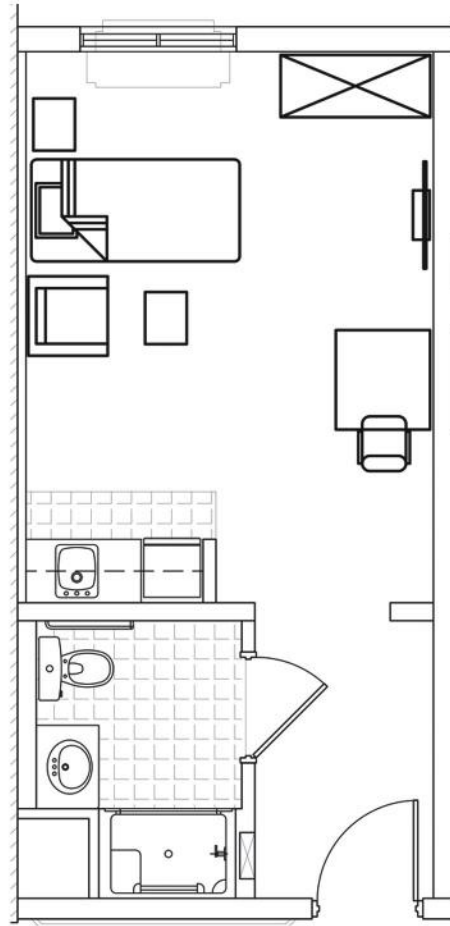
New seating areas surrounded by gardens are also planned for the front of the building, along with a large gazebo and accessible walkways.

Our parking lot will be expanded as well with an additional 45 parking spaces being added.

# New Suites

## The Lilac ( Studio )

- Between 370 to 400 sq ft
- Kitchenette
- Eastern or Western views



The Lilac suite offers ample square footage for a studio layout which is enough space for a queen bed, couch, chairs, dresser and small table or desk. You can decorate your suite with your furniture and pictures to your own personal taste.

The Lilac also includes a kitchenette with microwave and mini fridge. A 40" LED television is also provided in each suite.

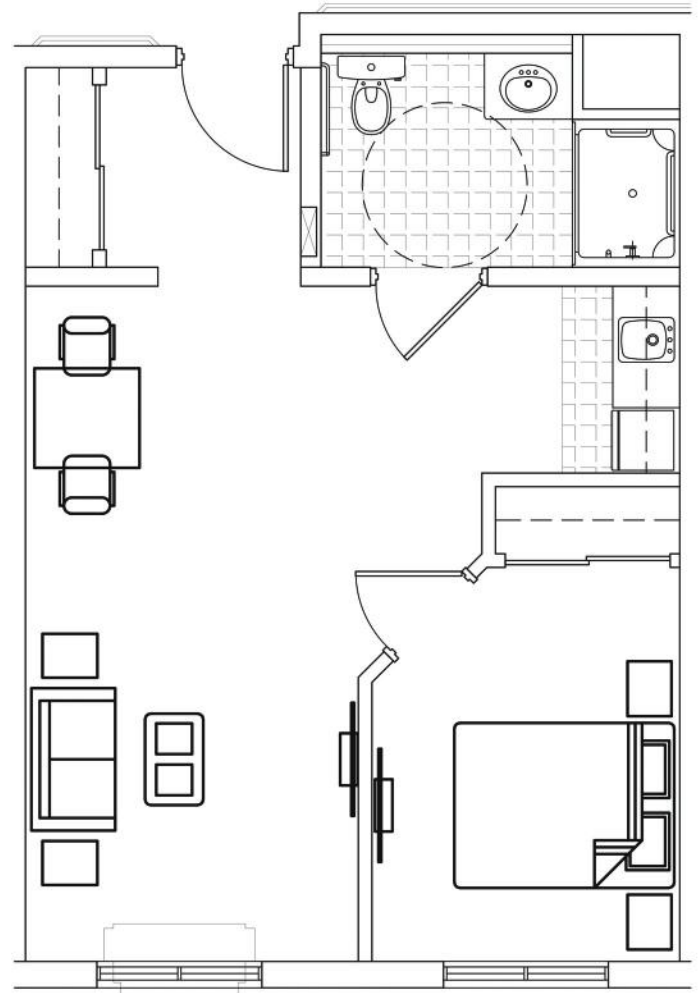
Having the option of an eastern or western view is an added benefit. You get to choose between looking out at the beautiful back woods of the Gardens or the evening sunsets on the western side of the building.

## New Suites

# The Birch

( One-bedroom )

- 594 sq ft
- Kitchenette
- Two Closets



The Birch suite layout is larger than any of our current one-bedroom suites and offers two closets. One closet in the bedroom and another next to the front entrance door.

The Birch includes a kitchenette with microwave and mini fridge. A 40" LED television is also provided in each suite.

The angled bedroom door is designed to maximize space and offer added accessibility to seniors.

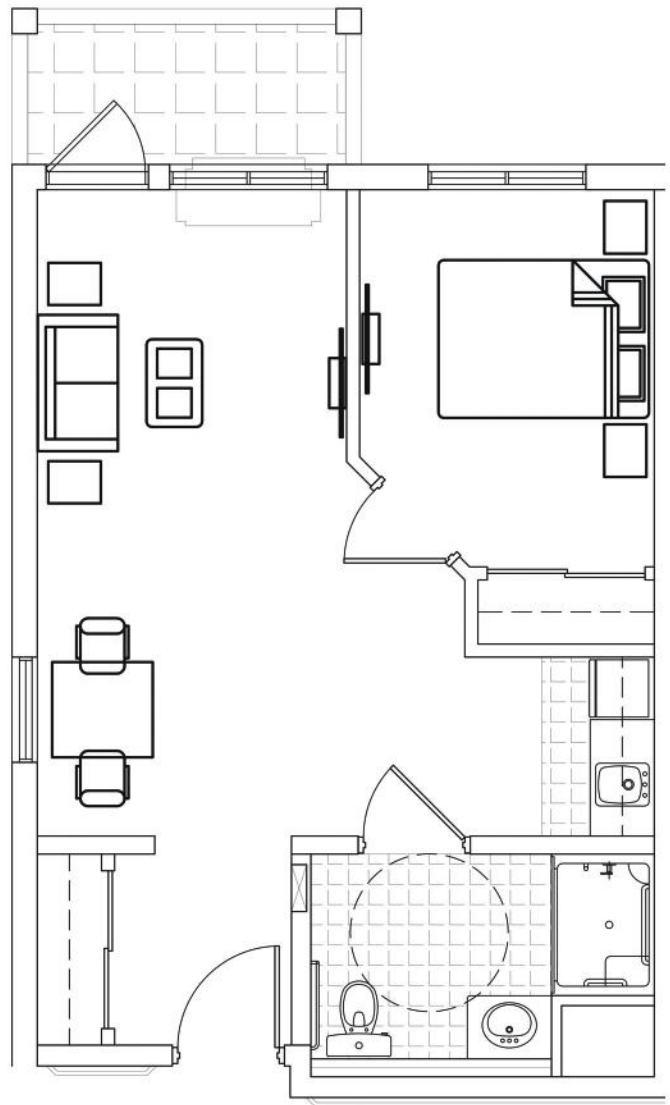
There will be a total of six Birch style suites as part of the 37 suite expansion. All of the suites will be westerly facing offering beautiful sunset views.

## New Suites

# The Maple

( One-bedroom )

- 630 sq ft *(including balcony)*
- Kitchenette
- Two Closets
- Large Private Balcony



The Maple's large one-bedroom suite offers two closets and a kitchenette. The kitchenette includes a microwave and mini fridge. A 40" LED television is also provided.

The angled bedroom door is designed to maximize space and offer added accessibility to seniors.

The large private balcony allows residents to have a private outdoor place overlooking the quiet and beautiful back woods of the Gardens.

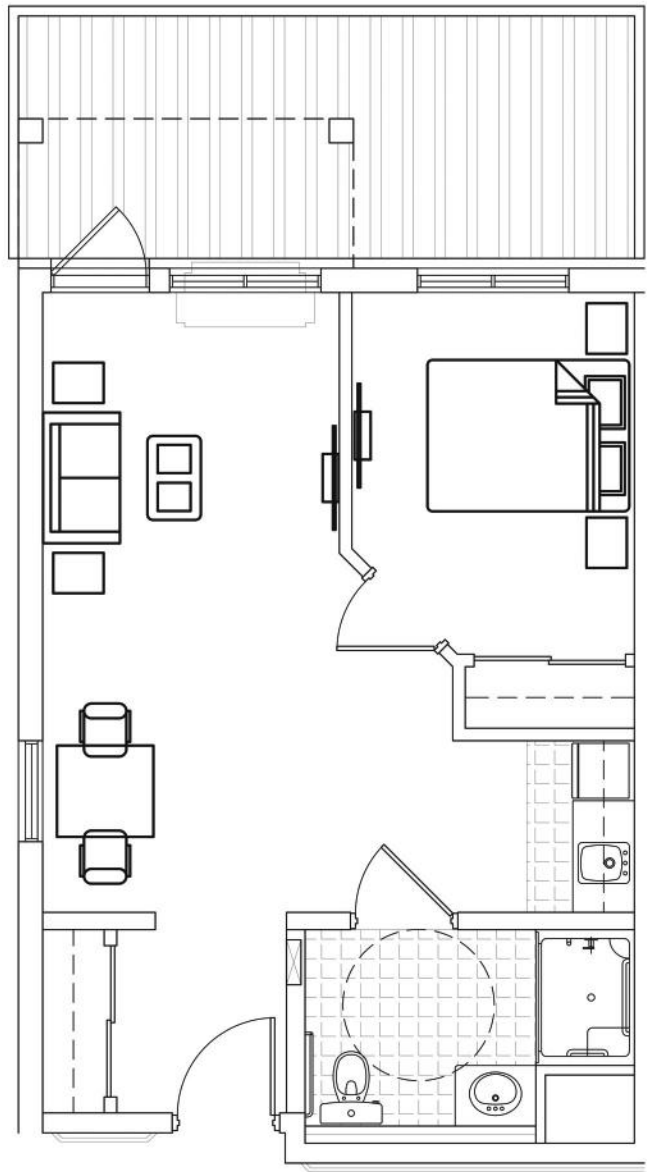
There will be a total of twelve Maple style suites as part of the 37 suite expansion.

## New Suites

# The Oak

( One-bedroom )

- 750 sq ft *(with terrace)*
- Kitchenette
- Two Closets
- Large Private Walk-out Terrace
- Ground Floor



The Oak suite layout is the largest one-bedroom at the Gardens of Parry Sound and the only suite style located on the ground floor.

The large private walk-out terrace allows residents to have a private outdoor place overlooking the quiet and beautiful back woods of the Gardens.

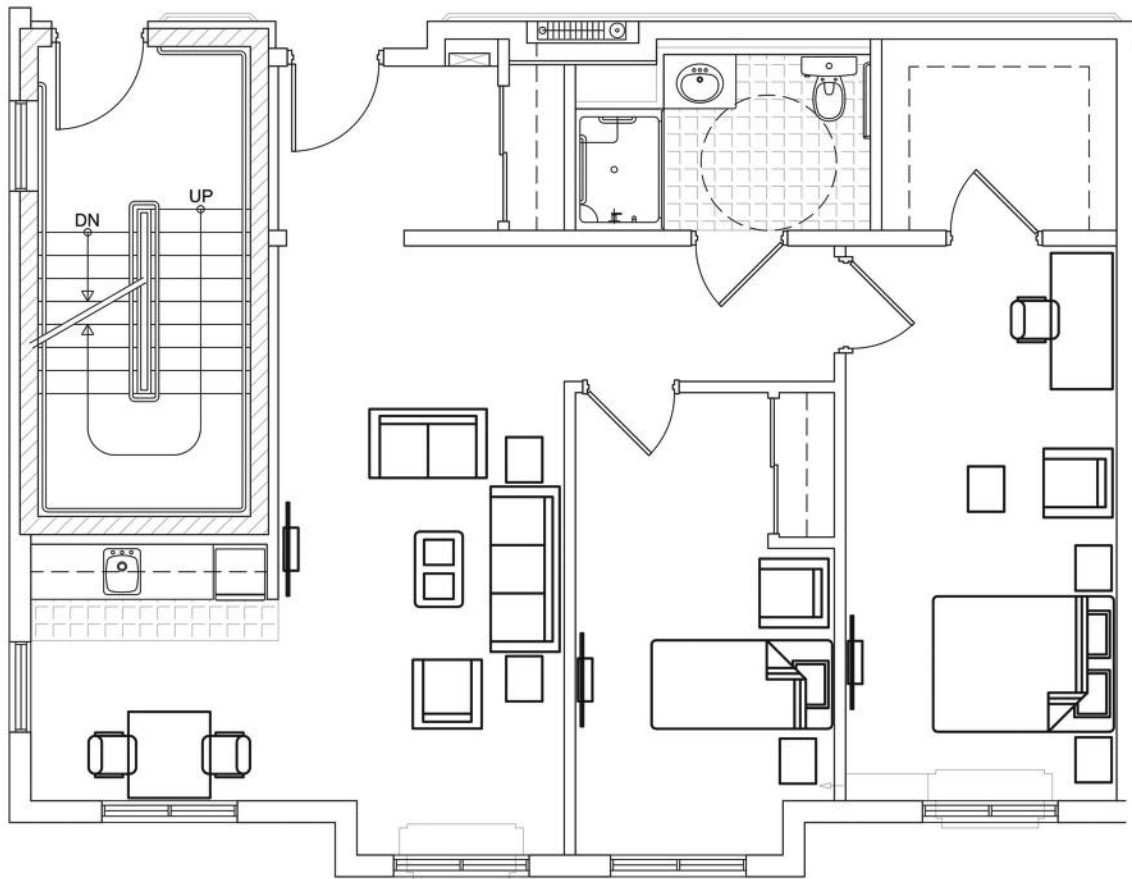
The Oak also features a kitchenette, two closets and a provided 40" LED television.

There will only be 4 of these suite styles included in the 37 suite expansion.



# The White Pine

( Two-bedroom | 1,030 sq ft )



The White Pine suite is the only two-bedroom and the largest layout available at the Gardens of Parry Sound at 1,030 sq ft.

This corner suite offers five exterior windows for plenty of daylight, a kitchenette, living area and two large bedrooms. The master bedroom includes an extra space for a home office and an impressive walk-in closet.

There will only be 3 White Pine suites include in the 37 suite expansion.